



2012  
GUIDE TO THE VILLAGE  
AT MACHRIHANISH DUNES



SOUTHWORTH  
Europe

TABLE OF CONTENTS

The Village at Machrihanish Dunes Overview

PG 1-3

The Ugadale Hotel

PG 4

The Royal Hotel

PG 5

The Ugadale Cottages

PG 6-7

Machrihanish Dunes Golf Course

PG 8-9

Suggested 2012 Golf Tour Itineraries

PG 10-11

Course Enhancements for 2012

PG 12

Fact Sheets

PG 13-16

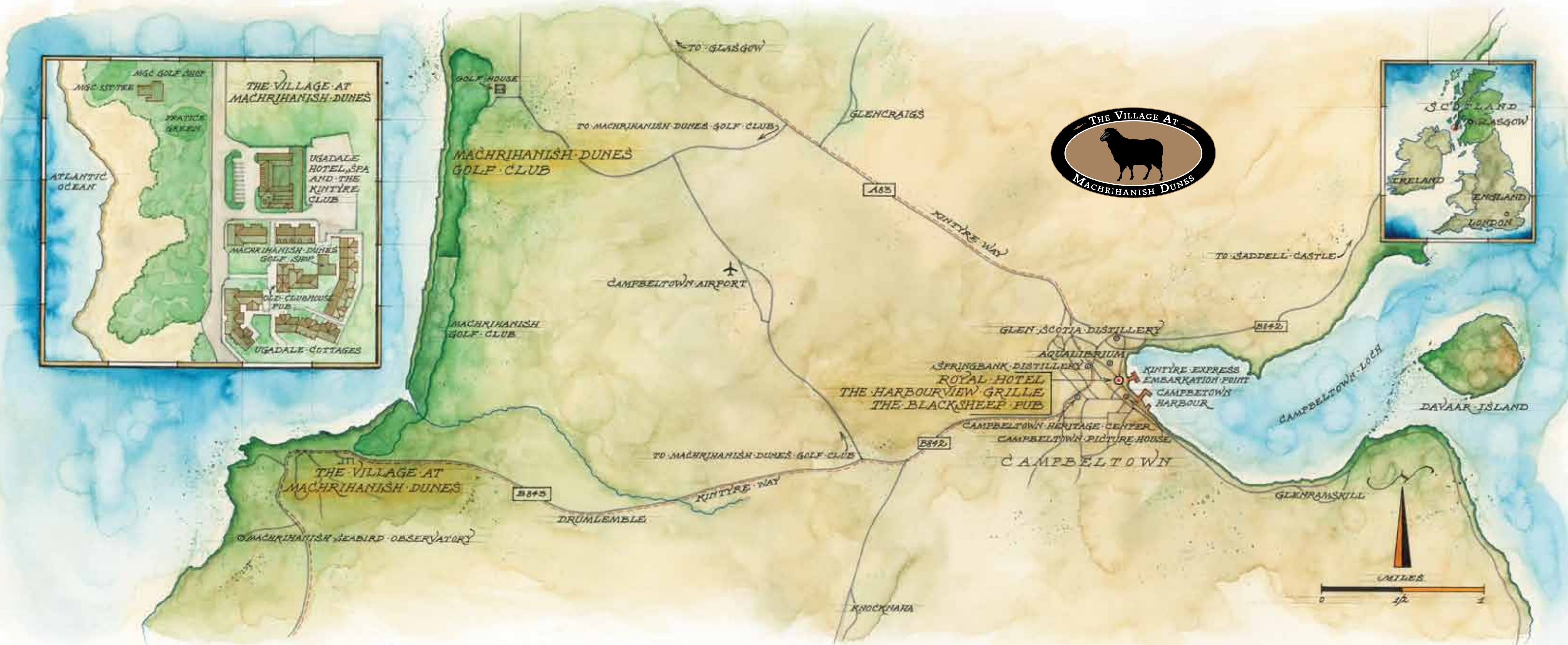


The world's most natural golf course. Luxurious seaside cottages. Historic hotels being restored to their former grandeur. And a village pub with an atmosphere that transcends time. All of these things and more are why The Village at Machrihanish Dunes has fast become Scotland's most exciting resort destination.

For golfers, or anyone looking to enjoy a rejuvenating holiday in one of Scotland's most scenic corners, Machrihanish Dunes offers the best of everything. Great golf. Elegant accommodations. A wealth of fine dining options. And much more. The amenities and personal service are nothing short of first-class. And all the magic of Kintyre is right at your doorstep.



# THE VILLAGE AT MACHRIHANISH DUNES



# THE UGADALE HOTEL



Once regarded as the pinnacle of luxury accommodation in the west of Scotland, The Ugadale Hotel has been restored to its former glory and serves as the centerpiece of the Village at Machrihanish Dunes. In its heyday, The Ugadale regularly welcomed captains of industry and their families from Scotland, Europe and the U.S., who descended on Machrihanish for summer holidays with their steamer trunks for relaxing times on the beach and golf links. Now, twenty-two stunning guest rooms and suites pamper guests in an atmosphere of casual elegance and offer modern amenities graced with historic charm.

When it's time to kick back, the Hotel will please even the most discriminating visitor with its inviting restaurant and bar in a private club setting, The Kintyre Club, and world-class Serenity Spa, a full-service spa offering a wide range of soothing and rejuvenating treatments. The Hotel also features a state-of-the-art Fitness Centre for improving your overall health and well being, as well as your golf game. In addition to its dining, fitness and spa facilities for guests, the Hotel serves as an ideal venue for corporate events, private parties, wedding receptions and other kinds of get-togethers.



UGADALE	AVERAGE SIZE	RATES
Ugadale Suite	52 sq. m / 556 sq. ft.	£79 - £275
Ugadale Superior	35 sq. m / 373 sq. ft.	
Ugadale Classic	25 sq. m / 267 sq. ft.	

\*Note: Rates vary based on season, availability and room configurations. The rates detailed above are per room and include breakfast and VAT. Rates are subject to change.

# THE ROYAL HOTEL



A mere five miles from Machrihanish in the heart of historic Campbeltown, a second hotel is also being restored to its former majesty. The Royal Hotel, with a prime location overlooking bustling Campbeltown Harbour, will serve as the in-town hotel option for visitors to The Village at Machrihanish Dunes. The Royal will usher visitors back to an era when Campbeltown was a thriving fishing and shipbuilding town – as well as the malt whisky capital of the world.

Guests at The Royal will enjoy unforgettable views of the harbour area, with its stone piers and scenic walkways. Within the hotel, you'll find all of the contemporary conveniences and amenities you'd expect in a modern luxury accommodation, set in the surroundings of old-world elegance. In addition to its 23 sumptuously appointed guest rooms, The Royal will also offer meeting and function space, the lively Black Sheep Pub, and The Harbourview Grille, providing culinary excellence overlooking bustling Campbeltown Harbour. Complimentary shuttle service will be provided throughout the day for guests who wish to stay "in town" but fancy a visit to the Ugadale Hotel and Cottages, the Spa, the Old Clubhouse Pub or the great natural links of the Machrihanish Dunes Golf Course.



ROYAL	AVERAGE SIZE	RATES
Royal Superior	37 sq. m / 397 sq. ft.	£79 - £215
Royal Classic	24 sq. m / 260 sq. ft.	



\*Note: Rates vary based on season, availability and room configurations. The rates detailed above are per room and include breakfast and VAT. Rates are subject to change.

# THE UGADALE COTTAGES

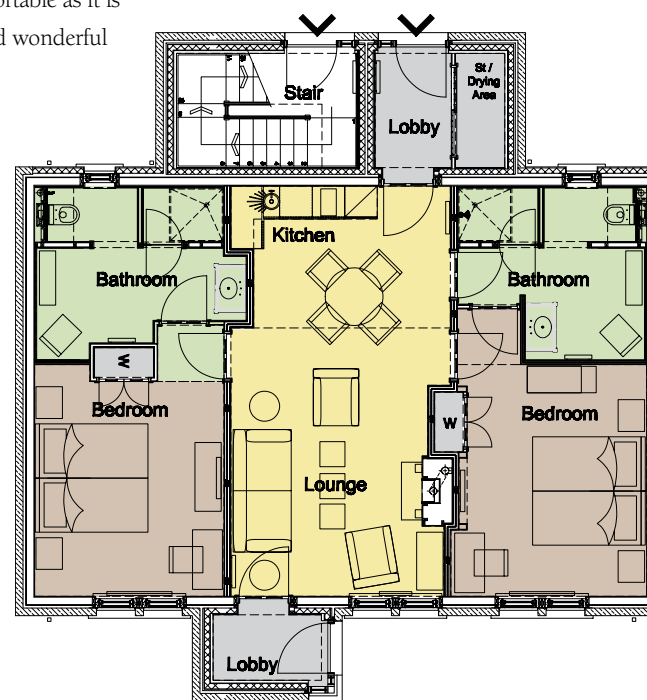


**“Hotel of the Year”  
-Golf Tourism Scotland, 2010**



Surrounded by unparalleled natural beauty, with all the grandeur of the Atlantic and the islands of the southern Hebrides right at your doorstep, the award-winning Ugadale Cottages offer holiday accommodation that is literally without equal. Each Cottage is as comfortable as it is luxurious, with interiors graced by natural stone, hardwoods and wonderful touches that conjure up the coastal cottage at every turn.

Named “Hotel of the Year” in 2010 by Golf Tourism Scotland in the small hotels/guest houses category, the Ugadale Cottages provide smart accommodations for four in two roomy and well appointed bedrooms (each with split-king beds and its own private bathroom), plus a kitchen, dining area and living room. The Cottages have been thoughtfully configured to perfectly accommodate visiting golfers – as well as families, walkers, birdwatchers, and other visitors to the area.



# 2012 ROOM RATES FOR UGADALE GOLF COTTAGES

UGADALE	AVERAGE SIZE	RATES
Ugadale Cottages	95 sq. m / 1024 sq. ft.	£149 - 309

The rates detailed above are per room and include breakfast and VAT. Rates are subject to change.



# MACHRIHANISH DUNES GOLF COURSE



"2010 Top 100 Golf Courses in U.K. & Ireland"  
 - *GolfWorld*  
 "2010 Top 100 Golf Courses of Scotland"  
 - *Golfweek*  
 "2009 Best New Courses"  
 - *Links Magazine*  
 "2009 & 2011 Best Courses in Great Britain & Ireland"  
 - *Golfweek*  
 "2008 Best New Courses"  
 - *Golf Links Magazine*  
 "2008 Future Classics - Top 100 in UK"  
 - *GolfWorld*

In Scotland, true links golf courses are not created, they are born of the land. Of the roughly 259 acres on which the Machrihanish Dunes Golf club sits, only seven – yes, seven – were disturbed in creating this thrilling, 7,175-yard 18-hole adventure, which features no less than six greens and five tees at the Atlantic's edge. Only the tees and greens were shaped and seeded under the watchful eye of renowned course designer David McLay Kidd. The rest is just as nature intended it to be.

The championship caliber links at Machrihanish Dunes were named one of the U.K.'s Top 100 courses by *Golf World* magazine, and one of the Top 30 Modern Courses in Great Britain and Ireland by *Golfweek*. The course offers you a rare opportunity to create and craft golf shots just as men of Scotland did centuries ago, when they conceived the game, brought it to birth – and gave it to the world. Machrihanish Dunes encourages thought, creativity and imagination. For the golfer who accepts the invitation and the challenge, the reward is a truly unforgettable experience.



# MACHRIHANISH DUNES GOLF COURSE 2012 GOLF RATES

PEAK SEASON 1-Apr thru 31-Oct		LOW SEASON 1-Nov thru 31-Mar	
ROUND	DAY	ROUND	DAY
£ 56.00	£ 79.00	£ 30.00	£ 40.00

Note: Rates include VAT and are subject to change.

Machrihanish Dunes is built on a Site of Special Scientific Interest (SSSI) and consequently walking is required. Our SSSI status does not permit powered golf carts. Players may either walk with a caddie or walk and carry your bag or use a trolley. Use of a caddie is strongly recommended due to the nature of the course. Caddie fees are currently £35 per bag and additional tip is at your discretion, but is expected. A caddie must be reserved in advance to insure availability. Use of our first-class practice facilities and range balls are included with each green fee.

## MACHRIHANISH DUNES COURSE MAP



HOLE	BLACK	BLUE	WHITE	YELLOW	RED	PAR	S.I.
1	392	383	366	335	295	4	9
2	366	330	313	292	257	4	13
3	186	172	159	148	138	3	17
4	450	418	391	369	337	4	5
5	329	324	300	295	244	4	15
6	405	378	350	314	246	4	11
7	552	526	499	458	415	5	1
8	476	429	415	384	361	4	3
9	447	407	395	360	317	4	7
OUT	3603	3367	3188	2955	2610	36	
10	347	318	294	263	221	4	12
11	483	466	423	375	375	4	6
12	594	565	549	509	494	5	4
13	314	282	253	223	184	4	14
14	167	162	131	129	112	3	16
15	149	149	140	98	98	3	18
16	457	454	427	391	349	4	8
17	618	593	556	513	513	5	2
18	443	427	386	359	329	4	10
IN	3572	3416	3159	2860	2675	36	
TOT.	7151	6783	6347	5815	5285	72	

# MACHRIHANISH DUNES – SUGGESTED 2012 GOLF TOUR ITINERARIES



Machrihanish GC



Turnberry



Royal Portrush

The award-winning Village at Machrihanish Dunes, Scotland's most exciting new seaside golf resort, is a must-visit destination for golfers who appreciate something unique and demand the very best. Today, Machrihanish is more accessible than ever. From downtown Glasgow, it's a little more than a three and a half hour journey down one of Great Britain's most scenic routes to Machrihanish Dunes. Along the way, see Loch Lomond, drive along beautiful Loch Fyne and pass within steps of stately Inveraray Castle. If you'd prefer to fly, there are direct flights from Glasgow to nearby Campbeltown Airport. And with the Kintyre Express now connecting Campbeltown with both Troon in Ayrshire and Ballycastle in Northern Ireland, you can travel by sea, as well.

Upon arrival in the quaint seaside town of Machrihanish, you'll have many options for both golf and other forms of holiday merry-making on the Mull of Kintyre and beyond. Here are a few sample itineraries that outline some of the unforgettable golf adventures that might include a visit to Machrihanish Dunes. Whether you fancy playing the famous Open Championship courses of Ayrshire, the much-heralded courses around Inverness and the Highlands, or the great courses of Northern Ireland, we're betting that your visit with us will be the highlight of your trip.

# MACHRIHANISH DUNES – SUGGESTED 2012 GOLF TOUR ITINERARIES



Portstewart



Ballyliffin

## MACHRIHANISH & Ayrshire

### Day One

Arrive at The Village at Machrihanish Dunes

Play U.K. Top-100 ranked Machrihanish Dunes GC

Stay at The Village at Machrihanish Dunes

### Day Two

Play Machrihanish Dunes GC or Machrihanish Golf Club

Stay at The Village at Machrihanish Dunes

### Day Three

Play Machrihanish Dunes GC or Machrihanish GC

Stay at The Village at Machrihanish Dunes

### Day Four

Play Dunaverty GC

*Optional:* Play The Machrie on Islay and visit the Islay Whisky Distilleries

Stay at The Village at Machrihanish Dunes

### Ayrshire

Travel via The Kintyre Express from Campbeltown to Troon – Travel Time 90 minutes

Play on the Ayrshire coast at Turnberry GC, Royal Troon GC, Prestwick GC, Western Gailies GC or other Ayrshire courses

## MACHRIHANISH & Inverness-Highlands

### Day One

Arrive at The Village at Machrihanish Dunes

Play U.K. Top-100 ranked Machrihanish Dunes GC

Stay at The Village at Machrihanish Dunes

### Day Two

Play Machrihanish Dunes GC or Machrihanish GC

Stay at The Village at Machrihanish Dunes

### Day Three

Play Machrihanish Dunes GC or Machrihanish GC

Stay at The Village at Machrihanish Dunes

### Day Four

Play Dunaverty GC

*Optional:* Play The Machrie on Islay and visit the Islay Whisky Distilleries

Stay at The Village at Machrihanish Dunes

### Inverness-Highlands

Travel to Inverness – Travel Time 5 hours

Play Royal Dornoch GC, Nairn GC, Castle Stuart GC

## MACHRIHANISH & Northern Ireland

### Day One

Arrive at The Village at Machrihanish Dunes

Play U.K. Top-100 ranked Machrihanish Dunes GC

Stay at The Village at Machrihanish Dunes

### Day Two

Play Machrihanish Dunes GC or Machrihanish GC

Stay at The Village at Machrihanish Dunes

### Day Three

Play Machrihanish Dunes GC or Machrihanish GC

Stay at The Village at Machrihanish Dunes

### Day Four

Play Dunaverty GC

*Optional:* Play The Machrie on Islay and visit the Islay Whisky Distilleries

Stay at The Village at Machrihanish Dunes

### Northern Ireland

Travel via The Kintyre Express from Campbeltown to Ballycastle, Northern Ireland – Travel Time 90 minutes

Play Royal Portrush, Portstewart, Royal County Down, Castlerock, Ballyliffin or other courses in Northern Ireland and Ireland



**HOLE #1**

The black tee has been moved to the right to make the fairway visible from all teeing grounds. The green has been softened as it was deemed a bit too undulating for a green into which players were hitting a blind shot.

**HOLE #2**

The location of the second tee has been shifted inland, making the fairway more visible from the tee. This also provides a vantage point that offers stunning views of the ocean, something golfers are sure to enjoy – especially so early in the round! The green has been altered on the right to add more pinable positions.

**HOLE #3**

The blue tee has been moved to higher ground to make the green more visible; the area where the old tee was is now being used as a golf path, which helps reduce the length of the walk. The area that was rough 15 yards short of the green, which golfers had to carry, has been mown down, as this was felt to be too penal.

**HOLE #4**

The golf path to the fairway has been altered, shortening the walk, and the landing zone within the fairway has been substantially softened to increase playability. To keep the diversity of plants within the area, there has been a major rough management (reduction) program, helping to protect wild flowers but also thinning out the thick, unplayable rough.

**HOLE #5**

Again here, to protect the site and enhance playability, there has been a lot of rough management; the golf path to the fairway has also been shortened.

**HOLE #6**

The golf path was altered to reduce the walk, better aiming poles have been installed and the greenside bunkers have been re-shaped.

**HOLE #7**

The 7th green was altered to increase pinable positions within the putting surface, the shape of the fairway bunker was modified, and again there has been an extensive rough management program.

**HOLE #8**

Green has been moved 40-50 yards closer to the fairway, shortening the hole and reducing the carry required to reach the green. The golf path has been altered to reduce the walk, better aiming poles have been added and a new ladies tee has been constructed to make the shot to the fairway easier.

**HOLE #9**

The 9th fairway was widened, making the tee shot less demanding and the approach shot to the green more straightforward.

**HOLE #10**

The large fairway bunker has been made into two smaller bunkers, an additional aiming pole has been added and the unplayable rough on the left side has been thinned out.

**HOLE #11**

The entrance to the fairway has been widened and the unplayable coarse rough has been thinned out, again protecting the diversity of plants and enhancing the enjoyment of the golf course.

**HOLE #12**

The green has been softened on the right side and the approach to the green widened. Also, the problematic thick rough in several areas has been addressed.

**HOLE #13**

New aiming marker for the green has been added to this driveable par 4, reducing the uncertainties of the desired direction of the tee shot.

**HOLE #14**

The green has been enlarged, making more pinable positions and the rough around the green thinned out. Fantastic views of the Ugadale Cottages from here!

**HOLE #15**

The tee location has been altered, allowing a new, less undulating golf path to the next green.

**HOLE #16**

Extensive rough management has taken place, along with moving the blue/white and yellow tees forward and creating a new ladies tee – thus reducing the length of this challenging par 4 for most players.

**HOLE #17**

A large, hidden bunker that made the second shot on the par-5 17th hole overly challenging (some might say unfair!) has been removed. Rough management has made the hole less daunting. More visible marker poles have also been installed.

**HOLE #18**

The fairway has been moved to the right and the back of the green altered. The new shape of the hole fits in better with the land's natural contours. Marker poles have been added to aim the golfer better.



*On the outer fringe of western Scotland, there exists a very special place. Nestled in the southwest corner of the Mull of Kintyre, where the movements of sea, sand, wind and grazing sheep have intertwined over countless centuries, an inspirational golf and holiday destination has been born. Here, in this raw and beautifully rugged place, you'll find The Village at Machrihanish Dunes – a magical place where you can reconnect with nature while reveling in accommodations that surround you with luxury.*

*The Village at Machrihanish Dunes, consisting of the Machrihanish Dunes Golf Club, The Ugadale Golf Cottages, The Old Clubhouse Pub & Restaurant, and two historic hotels now undergoing refurbishment, provides visitors with a golf and holiday resort experience rivaling the best in the world.*

**NEW LUXURY ACCOMMODATIONS**

**The Ugadale Cottages** – Located in Machrihanish overlooking the Atlantic and the famous opening hole at Machrihanish Golf Club is the first of the new luxury accommodations completed at The Village at Machrihanish Dunes. Each of the eight two-bedroom golf cottages has been built from the finest natural materials and appointed with an eye toward casual elegance. The cottages are fully furnished and finished to the highest standard and have a fireplaced central living area and a kitchenette along with two bedrooms with either two twins or a zip king configuration and en suite bathroom. The golf cottages are available for rent on a nightly basis or for life with a limited number of attractive shared seasonal ownership opportunities.

The Ugadale Cottages received Golf Tourism Scotland's 2010 Gold Standard Award for "Hotel of the Year" in the Small Hotel category. A total of 32 Golf Cottages are planned at The Village at Machrihanish Dunes.

**The Ugadale Hotel** – Standing proud for more than 100 years, The Ugadale Hotel (also known as the Machrihanish Hotel), was once regarded as the pinnacle of luxury accommodation in the west of Scotland. In its heyday, The Ugadale regularly welcomed captains of industry and their families, who descended on Machrihanish for summer holidays with their steamer trunks and visions of relaxing times on the beach and golf links.

Twenty-two stunning guest rooms and suites pamper guests in an atmosphere of casual elegance and offer modern amenities graced with historic charm. When it's time to kick back, the Hotel will please even the most discriminating visitor with its warm and inviting private restaurant and bar, The Kintyre Club, and world-class Serenity Spa, a full-service spa offering a wide range of soothing and rejuvenating treatments. In addition to its dining and spa facilities, the Hotel will also serve as an ideal venue for corporate events, private parties, wedding receptions and other kinds of get-togethers.

**The Royal Hotel** – Hailed as a favourite destination for the Scottish 'elite' since the turn of the century, The Royal Hotel also has a long and fascinating history. The Royal Hotel was built in 1907 for Archibald Thompson by Architect James Munro, who later designed the Grand Hotel in St. Andrews using a similar but larger design. The Royal Hotel, located in the centre of Campbeltown and with views across famous Campbeltown Harbour, is being fully restored to provide twenty-three rooms, a pub and a restaurant. The Hotel, with its premier location, will cater to Campbeltown business travelers as well as golfers and area tourists. The Royal will usher visitors back to an era when Campbeltown was a thriving fishing and shipbuilding town— as well as the malt whisky capital of the world. No fewer than thirty-two distilleries called Campbeltown home in the late 1800s and early 1900s and one of those, Springbank, located just around the corner, remains the oldest independent family-owned distillery in all of Scotland.

In addition to its 23 sumptuously appointed guest rooms, The Royal will also offer meeting and function space, the lively Black Sheep Pub, and the Harbourview Grille, featuring culinary excellence overlooking Campbeltown Harbour. Complimentary shuttle service will be provided throughout the day for guests who wish to stay "in town" but fancy a visit to the Ugadale Cottages, the Spa, the Old Clubhouse Pub or the great natural links of the Machrihanish Dunes Golf Club.

**The Old Clubhouse Pub** – Just a few steps away from the Ugadale Cottages is the The Old Clubhouse Pub & Restaurant. Once the original clubhouse for Machrihanish Golf Club, The Old Clubhouse Pub underwent a complete interior transformation in 2009. Warm and welcoming, the classic Scottish pub now serves as a central meeting place for visitors and locals alike. Unwind following your round over a pint or wee dram of malt paired with skillfully prepared traditional Scottish fare.



MACHRIHANISH DUNES GOLF COURSE

The championship-standard course at Machrihanish Dunes was created by hand in and amongst environmentally protected dunes that couldn't have been better suited for a world-class links golf course. It has been hailed as "the world's next great golf experience" – and with good reason. The 18-hole seaside layout you'll play here is a pure links course that harkens back to the 19th-Century origins of links golf and presents challenges unlike any you're liable to have encountered before. It's a course that has quickly earned a reputation for its majestic beauty – and its prolific challenges.

While the original site featured 23 "natural" holes, architect and Scotsman David McLay Kidd (who is internationally acclaimed for his design of Bandon Dunes in Oregon as well as the Castle Course in St. Andrews), chose his 18 favourites. Machrihanish Dunes measures 7,151 yards and features six greens and five tees at the ocean's edge which are a true testament to "the way golf began".

**"The Greenest Golf Course in the World" – Machrihanish Dunes Setting a Standard**

Machrihanish Dunes isn't just the way golf began, it's the way golf should be. Located on 259 acres of pristine links land in Machrihanish, Scotland, Machrihanish Dunes is the first golf course ever to be permitted to be built on a Site of Special Scientific Interest (SSSI). It is also the first 18-hole links golf course to be built on the west coast of Scotland in 100 years.

With SSSI status, the land which Machrihanish Dunes inhabits is amongst the most protected in Scotland. Pristine and beautiful, the site is not only the largest sand dune in the region but is also home to five rare types of orchid. Working hand in hand with Scottish Natural Heritage, Machrihanish Dunes continues to work with independent environmental specialists to continue required assessments for maintenance and management practices at the most comprehensive eco-levels.

As a result of these efforts, Machrihanish Dunes has received Golf Environmental Organization (GEO) Certification for creating and maintaining a sustainable golf agenda, while fulfilling GEO's required assessments for maintenance and management practices at the most comprehensive eco-levels. Machrihanish Dunes was the first 18-hole golf course in the U.K. ever to achieve GEO certification. GEO is the only international non-profit organization dedicated entirely to helping golf achieve its potential as a social, environmental, and economic asset. GEO's certification programs are the most credible, comprehensive eco-labels available for existing golf facilities and new developments.

**Quick Facts on Machrihanish Dunes Maintenance Practices**

- Almost no heavy machinery was used in the course's construction.
- Shaping was done only on the greens and tees, and only with the use of a backhoe.
- Bunkers, for the most part, were simply placed in areas that rabbits had already damaged.
- In the end, just seven of the course's 259 acres were altered to create the course as it exists today.
- Black Hebridean Sheep are used in the off-season to help keep fescue grasses in check.
- No chemicals or irrigation are used on the fairways

Though Machrihanish was built in a way that mirrors how golf began, it may also be the first clear look at the golf course of the future. Fully sustainable, rugged, raw, and beautiful, Machrihanish Dunes co-exists with the land to actually improve the quality of the environment. With the active removal of trash and non-native pests that had begun to inhabit the space, Machrihanish Dunes has returned a pristine state to the land that now offers visitors such a wonderfully natural golf experience.

LOCATION

Machrihanish Dunes is located on the Atlantic Ocean adjacent to the world-famous Machrihanish Golf Club, designed in 1876 by "Old Tom" Morris. Machrihanish GC is a perennial Top 100 Course in the World (currently ranked 39th of *Golf Digest's* Top 100 Courses Outside the U.S.) and is always on the "short list" of serious golfers worldwide. Machrihanish GC is known among other things for arguably having "the best opening hole in golf."

With its oceanfront location, Machrihanish Dunes possesses breathtaking views of the Atlantic Ocean, the Paps of Jura (the mountains to the east), the Isle of Islay and the northern coast of Ireland. Its natural location has afforded Machrihanish Dunes one of the finest dune structures in the United Kingdom. "Old Tom" Morris wrote of the natural land in Machrihanish: *"The Almighty maun hae had gowf in his e'e when he made this place."*

The adjacent town of Campbeltown is most notable for its famed Springbank Distillery and for the fact that, from 1849 to 1916, the town boasted 32 distilleries, which made it the whisky capital of the world. Its location in Kintyre was made famous by resident Sir Paul McCartney's immortal song "Mull of Kintyre."

ACCESS TO MACHRIHANISH

The Kintyre peninsula is not only one of Scotland's most secluded outposts, it is one of its best-kept secrets. In the past it has required an effort of will to seek it out but always with the prospect of rich reward at journey's end. Now, the construction of Machrihanish Dunes Golf Club has led to a wealth of transportation improvements. As demand for the Kintyre Peninsula grows, travelers will enjoy easy access to some of the world's most renowned courses. Six of the world's top 100 courses (Machrihanish, Turnberry, Royal Troon and Royal Prestwick in Ayrshire and Royal County Down and Royal Portrush in Ireland) and a few of the world's finest hidden gems (including The Machrie, Western Gailes and Shiskine), are within two hours of our door.

**By Air:** Air access is direct into Campbeltown Airport. Both commercial and private jets can fly directly from a number of airports including Glasgow and Prestwick and touch down on the second longest runway in Europe, just minutes from the first tee. Loganairs' Flybe offers flights twice-daily weekdays direct from Glasgow to Machrihanish with a flight time of a mere 25 minutes. Local helicopter and Loch Lomond Sea Planes provide golfers with convenient and fast access to courses throughout Scotland from almost any origin.  
**www.Flybe.com | www.LochLomondSeaplanes.com**

**By Sea:** Let the Kintyre Express transport you at speed and in style while you enjoy a taste of whisky and the stunning scenery of the Firth of Clyde and Campbeltown Loch before arriving in Campbeltown Harbour. Crossing from Troon (on the Ayrshire Coast) and from Ballycastle (in Northern Ireland). Machrihanish golfers now have the ability to extend their golf vacations to include several famous golf destinations including Royal Troon, Turnberry, Prestwick and Western Gailer in Ayrshire, and Royal Portrush, Royal County Down and Portstewart in Northern Ireland.

Both routes have scheduled round trip service and boats are available for private charter as well. Crossing time is 90 minutes to Ballycastle and 40 minutes to Troon. The service utilizes Redbay Stormforce 11 metre (36 foot) rigid inflatable boats with centrally heated and fully enclosed cabins that seat 12 and have a cruising speed of 37 knots. Vessels are coded to MCA requirements and are crewed by qualified and experienced skippers.  
**www.KintyreExpress.com**

**By Land:** The breathtaking three-hour drive from Glasgow is a three-stage scenic delight conjuring memories of several song lyrics along the way. It is a journey of discovery that begins along the "Bonnie Bonnie Banks of Loch Lomond," then

winds through the Highlands (which locals call "the rest-and-be-thankful drive"), one the most scenic drives in Europe, and finally, it meanders along a stunning Atlantic coastal highway. If time permits, it's recommended that this scenic drive be experienced at least one way.

Machrihanish Dunes shuttle busses provide transport for guests to Machrihanish Dunes Golf Club, The Village of Machrihanish Dunes (The Ugadale Hotel, The Ugadale Cottages, and The Clubhouse Pub), The Royal Hotel and the Campbeltown Airport.

THE DEVELOPER

Machrihanish Dunes Golf Club; The Village at Machrihanish Dunes, The Ugadale Hotel and The Royal Hotel are owned and operated by an affiliate of Southworth Development, LLC of Newton, Massachusetts.

Southworth Development specializes in the creation of residential resort and hospitality-branded real estate communities. Founded by David Southworth, the company has grown to become one of the industry's great success stories. During his career, David has developed over \$1 billion in golf and hospitality projects. Today, Southworth Development is recognized as a leader in the field, known for its dedication to quality and consistency.

In 2006, Joe Deitch, a longtime close friend of David Southworth, joined the company as Chairman and visionary partner. Along with David, Joe has helped position the company to succeed in the dramatically changing world of real estate and resort development. Joe's passion for the business and his many talents have helped create an organization that's unique in the real estate development world – a veritable "dream team" of professionals from many different disciplines. As the Founder and Chairman of Commonwealth Financial Network, the nation's largest privately owned, independent broker/dealer firm with over \$50 billion in management, Joe's financial acumen is well known. His expertise has strengthened the Southworth company on many levels. But Joe is much more than just a numbers guy. He's a true visionary with an innate ability to spot, and capitalize on, the trends that shape our industry. His marketing savvy helps steer the company on a regular basis. And his personal commitment to the ideals of quality, community and integrity reinforces all that Southworth stands for.

**Southworth's other properties include:** Meredith Bay, a remarkable new 600-unit gated community and marina on New Hampshire's famed Lake Winnepesaukee; Renaissance, in Haverhill, Massachusetts, the first Brian Silva Signature Golf

## FACT SHEET

Course, and the 2012 “Golf Course of the Year” by the New England chapter of the *Golf Course Owners Association of America*. The Club’s beautiful 30,000 square-foot clubhouse opened in 2009; **Creighton Farms**, a 964-acre, luxury residential golf community located just outside of Washington D.C. in Aldie, Virginia. Creighton Farms features a Jack Nicklaus Signature Golf Course, recognized as one of the ‘Best New Courses in 2008’ by *Golf Digest*, *Golf Magazine* and *Travel + Leisure Golf* – one of only two private courses in the world to be recognized by all three publications that year. It was also recognized by *Golfweek* as one of the nation’s “Best New Courses” for 2009. Finally, there’s **PGA Village - The Bahamas**, a community that sits on a 1,906-acre oceanfront site and when completed will consist of 36 holes of oceanfront championship golf including a course now under construction designed by Rees Jones, a PGA Learning Center and Historical Center, a five-star boutique hotel, casino, residential/retail village and over 1,500 residential units.

---

### ACCOLADES

---

*Golf World Magazine:*

2011 Top 100 Golf Courses in Scotland #26

*Golf Tourism Scotland:*

2010 Gold Standard Awards “Hotel of the Year”  
(Small Hotel Category)

THE UGADALE COTTAGES - MACHRIHANISH DUNES

*Golf Environmental Organization (GEO):*

First-ever GEO certified golf course in the U.K.

*Golf World Magazine (UK):*

2010 Top 100 Golf Courses in U.K. & Ireland

*Links Magazine:*

2009 Best New International Courses #8

*Golfweek Magazine:*

2009 Best Modern Courses of Great Britain & Ireland #21

*Golf Links Magazine:*

2008 Best New Courses

*Golf World Magazine:*

2008 Future Classics - Top 100 in UK



## BOOK NOW!

Our staff is standing by ready to help you book now or answer any questions you may have in any regard.

Reach us by email at [info@machdunes.com](mailto:info@machdunes.com) or by phone at +44 01586 810000 or freephone within the UK 0800 151 3701.



THE VILLAGE AT MACHRIHANISH DUNES, MACHRIHANISH, ARGYLL, SCOTLAND, PA28 6PT

[WWW.MACHDUNES.COM](http://WWW.MACHDUNES.COM) | EMAIL: [INFO@MACHDUNES.COM](mailto:INFO@MACHDUNES.COM)